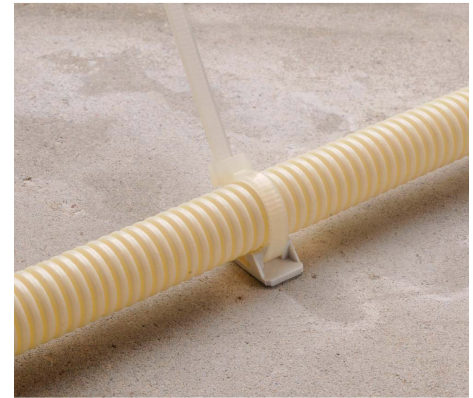


ESD

For fastening of cable ties or single cables. The ESD fits into a 6 mm diameter drilled hole and is the "clip on" fixing for the EC Euro clip. ESD 11 can be used for fastening of plasterboards.



El.no	Type	Colour	Pin L mm	Package
1323134	ESD 30	Grey	27	100
1323135	ESD 45	Grey	42	100
1323231	ESD 11	Grey	11	200
1323232	ESD 80	Grey	80	50

For installation on insulated walls, ESD 80.

Technical info:

Produced in polyamid, is UV-stabilised, halogen free and has non-corroding parts. Extracting force up to 40 kg. Temperature range: -20 - +85°C.